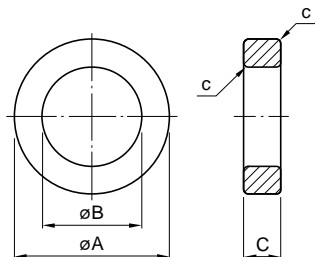


Ferrite Cores

T Series

For Power Supply and Signal Transformer
Toroidal Cores

CORE SHAPES AND DIMENSIONS/CHARACTERISTICS



Type (øAXCøB)	Dimensions (mm)			C1 (mm ⁻¹)	Ae (mm ²)	le (mm)
	øA	øB	C			
T3.05X1.27X1.27	3.05	1.27	1.27	5.65	1.06	5.99
T3.94X1.27X2.23	3.94	2.23	1.27	8.69	1.06	9.19
T4X1X2	4	2	1	9.06	0.961	8.71
T4.83X1.27X2.29	4.83	2.29	1.27	6.63	1.54	10.2
T5.84X1.52X3.05	5.84	3.05	1.52	6.36	2.05	13
T6X1.5X3	6	3	1.5	6.04	2.16	13.1
T8X2X4	8	4	2	4.53	3.84	17.4
T10X2.5X5	10	5	2.5	3.63	6.01	21.8
T12X3X6	12	6	3	3.02	8.65	26.1
T14X3.5X7	14	7	3.5	2.59	11.8	30.5
T20X5X10	20	10	5	1.81	24	43.6
T20X7.5X14.5	20	14.5	7.5	2.61	20.4	53.3
T28X13X16	28	16	13	0.864	76	65.6
T31X8X19	31	19	8	1.6	47.1	75.5
T38X14X22	38	22	14	0.82	109	89.7
T44.5X13X30	44.5	30	13	1.23	93	114

- Epoxy or paraxylene insulation coating is possible.

ELECTRICAL CHARACTERISTICS

AL-value(nH/N²)

Type (øAXCøB)	HP5	H5B2	H5C3	PC40	H5A	H5C2
T3.05X1.27X1.27	1100±20%	1700±25%	3340±30%			
T4X1X2	670±20%	1000±25%	2000±30%			
T3.94X1.27X2.23	720±20%	1080±25%	2170±30%			
T4.83X1.27X2.29	950±20%	1400±25%	2840±30%			
T6X1.5X3	1000±20%	1500±25%	3000±30%			
T5.84X1.52X3.05	990±20%	1480±25%	2960±30%			
T8X2X4	1330±20%	2000±25%	4000±30%			
T10X2.5X5	1670±20%	2500±25%	5000±30%			
T12X3X6				1020±25%	1400±25%	3600±30%
T14X3.5X7				1200±25%	1650±25%	4200±30%
T20X5X10				1750±25%	2350±25%	6000±30%
T20X7.5X14.5				1050±25%	1800±25%	4100±30%
T28X13X16						14000±30%
T31X8X19						7700±30%
T38XX14X22						13160±30%
T44.5X13X30						10000±30%

- Measuring conditions: 10Ts, 10mV, 10kHz (H5C3, H5C2, H5B2, HP5)/50kHz (H5A), 100kHz (PC40)