

Ferrite Cores

UU Series

For Common-Mode Filter

U Type Cores

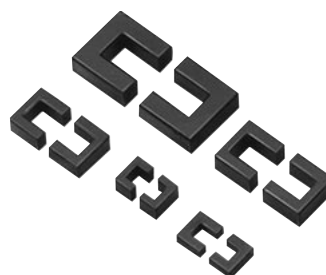
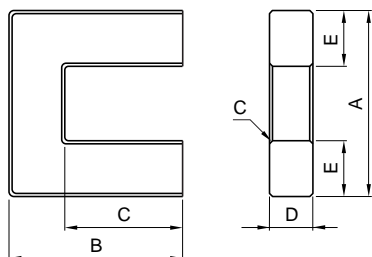
MATERIAL CHARACTERISTICS

Material			HS52	HS72	HS10
Initial permeability	μ_i		5500±25%	7500±25% [2000min., 500kHz]	10000±25%
Relative loss factor	$\tan\delta/\mu_i$	$\times 10^{-6}$	10[100kHz]	30[100kHz]	30[100kHz]
Saturation magnetic flux density*	Bs	mT[H=1194A/m]	410	410	380
Remanent flux density*	Br	mT	70	80	120
Coercive force*	Hc	A/m	6	6	5
Curie temperature*	Tc	°C min.	130	130	120
Electrical resistivity*	ρ_v	$\Omega\cdot m$	1	0.2	0.2
Density*	d_b	kg/m ³	4.9×10 ³	4.9×10 ³	4.9×10 ³

*Average value

• 1(mT)=10(G), 1(A/m)=0.012566(Oe)

SHAPES AND DIMENSIONS/CHARACTERISTICS



Part No.	AL-value* (nH/N ²)	Dimensions (mm)					Ae (mm ²)	le (mm)
		A	B	C	D	E		
HS72UU10.1	1005±25%	10.1±0.3	7.5±0.25	4.5±0.25	2.9±0.15	2.95±0.15	8.6	35.7
HS10UU10.1	1100±30%							
HS72UU10.5	1500±25%	10.5±0.3	7.85±0.2	5.35±0.2	5±0.2	2.5±0.2	12.5	40.3
HS10UU10.5	1700±30%							
HS72UU15.7	2600±25%	15.7±0.4	9.7±0.25	6±0.3	6±0.3	4.5±0.2	24.8	50
HS10UU15.7	3000±30%							
HS72UU19.7B	2960±25%	19.7±0.4	17.7±0.3	11.7±0.3	6±0.3	6±0.3	36	81
HS10UU19.7B	3400±30%							

*1kHz, 0.25A/m, 10Ts.